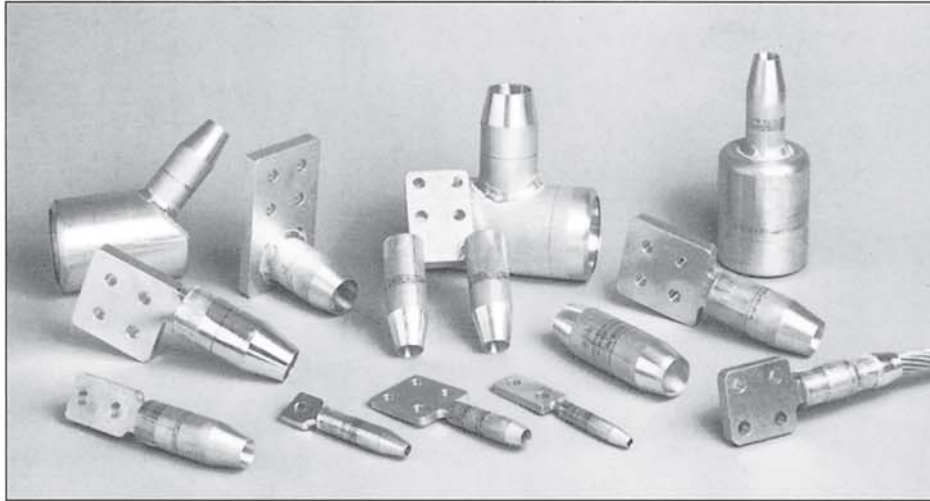


CableLok[®]

Cable Connecting System



Connects Cable With A Single Radial Swage

DMC
DESIGNED METAL CONNECTIONS

CableLok® Cable Connecting System

DMC CableLok® is known for its state-of-the-art design. DMC combined radial swage technology and the experience of over half a century in the connector business to create a remarkable swaging method for electrical cable connection.

This system swages a variety of configurations to a wide range of cable sizes with a minimum amount of tooling.

CableLok® Advantages

SAVE TIME - 360° compression swage technology means multiple "crimps" are not required. One swage and you're done.

ACHIEVE COMPLETE CONTACT - between the exterior surface of your cable and the interior of our fitting with a single swage.

FINISHED PADS allow both sides of the tang to be used equally as a connection surface.

TIN PLATED option is available for use with copper cable or copper equipment applications.

EASY INSTALLATION with hand-held tooling.

A WIDE RANGE of cable fitting sizes, types and configurations are available.

COMPLETE ENGINEERING, TESTING and MANUFACTURING facilities on our premises. Other sizes and specifications can be designed and manufactured to fit your requirements. Call DMC for your custom applications.

CableLok® Qualifications

DMC CableLok® is qualified to meet or exceed all of the nationally recognized standards, including **ANSI C119.4**, **NEMA CC 1** and **ASTM B117**.

DMC CableLok® provides you with a superior cable connection, as proven by various tests that were conducted.

Tensile Maximum 53% of conductor strength, Minimum 30% of conductor strength; 5% is required for Class 3 connectors per **ANSI C119.4**

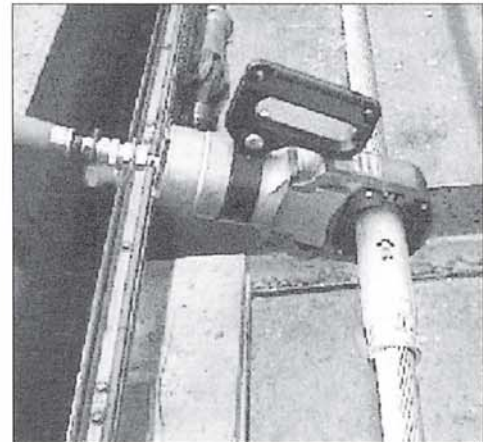
Salt Fog 1,000 hours per **ASTM B117**

Current Cycle 500 cycles (Class A) per **ANSI C119.4**; met all thermal and resistance requirements

Use DMC CableLok® for all of your substation cable applications. Call DMC for more information.



CableLok® connectors are available in a variety of configurations and sizes, with a convenient tool kit for easy installation.



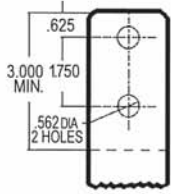
Using the DMC hydraulic tool, this connector test sample is swaged onto the cable during the conductor damage test per ANSI C119.4.

DMC
DESIGNED METAL CONNECTIONS

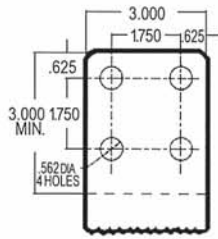
Standard Aluminum Compression Connectors

Standard NEMA Pad Configurations

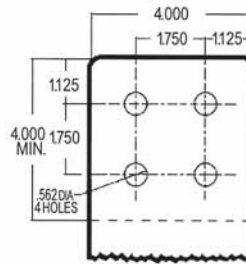
NEMA pad sizes and drilling can be custom ordered to your specifications. See the diagram below for standard dimensions. Thickness of pads is dependent upon the size of the cable. See individual parts on the following pages for more information.



2 Hole NEMA Pad
* Width varies with cable size



3" NEMA Pad



4" NEMA Pad

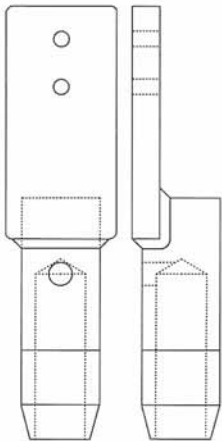
Thickness of NEMA Pads	
Barrel Identifier Numbers	Thickness
00006 to 00004	.250"
00002 to 02500	.375"
02668 to 08745	.625"
09000 to 18000	.750"
20000 to 25000	1.000"

CPLK9202

TERMINAL

2 HOLE, OFFSET

Identifier Numbers 00006-25000

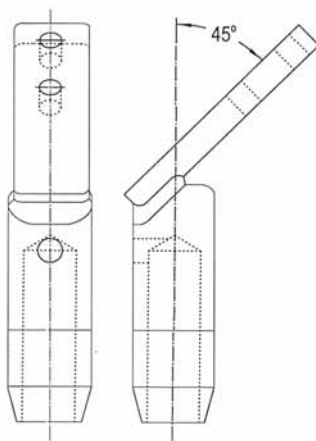


CPLK9204

TERMINAL

2 HOLE, 45° ANGLE

Identifier Numbers 00006-25000

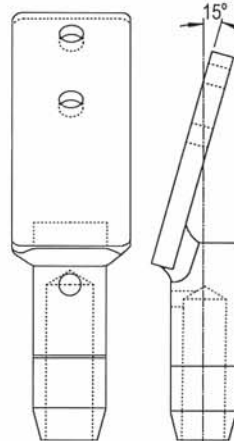


CPLK9205

TERMINAL

2 HOLE, 15° ANGLE

Identifier Numbers 00006-25000

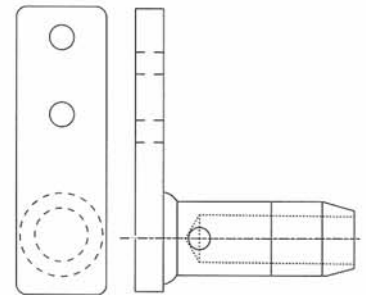


CPLK9209

TERMINAL

2 HOLE, 90° ANGLE

Identifier Numbers 00006-25000

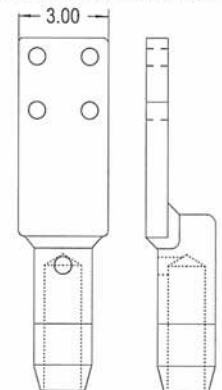


CPLK9432

TERMINAL, 3" WIDE

4 HOLE, OFFSET

Identifier Numbers 00006-25000

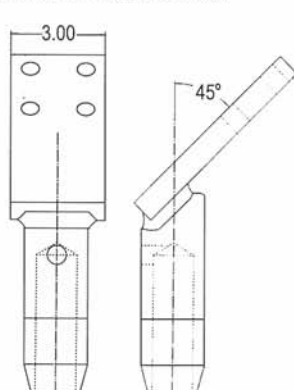


CPLK9434

TERMINAL, 3" WIDE

4 HOLE, 45° ANGLE

Identifier Numbers 00006-25000

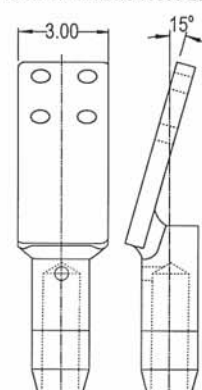


CPLK9435

TERMINAL, 3" WIDE

4 HOLE, 15° ANGLE

Identifier Numbers 00006-25000

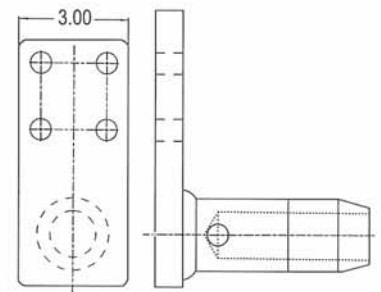


CPLK9439

TERMINAL, 3" WIDE

4 HOLE, 90° ANGLE

Identifier Numbers 00006-25000



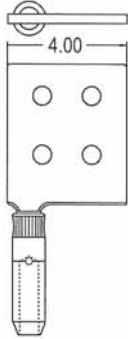
* For all of your grounding needs, ask about our **GroundLok**® product line. It uses the same tooling as **CableLok**® with our one swage technology.

Standard Aluminum Compression Connectors

CPLK9441

TERMINAL, 4" WIDE
4 HOLE, FLAG

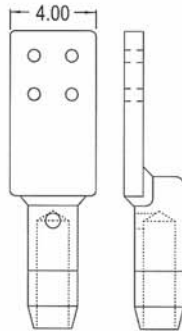
Identifier Numbers 00006-25000



CPLK9442

TERMINAL, 4" WIDE
4 HOLE, OFFSET

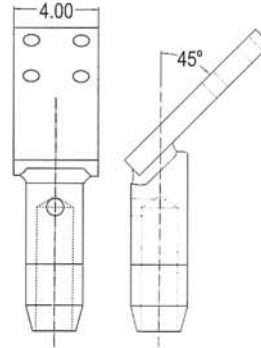
Identifier Numbers 00006-25000



CPLK9444

TERMINAL, 4" WIDE
4 HOLE, 45° ANGLE

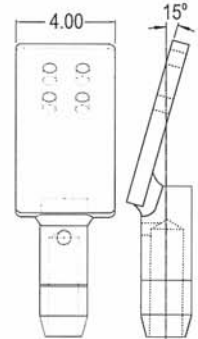
Identifier Numbers 00006-25000



CPLK9445

TERMINAL, 4" WIDE
4 HOLE, 15° ANGLE

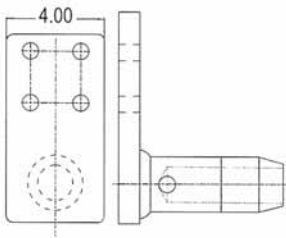
Identifier Numbers 00006-25000



CPLK9449

TERMINAL, 4" WIDE
4 HOLE, 90° ANGLE

Identifier Numbers 00006-25000

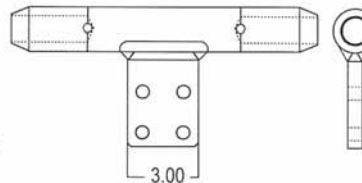


CPLK9503

TEE, TWO CABLE ENDS
to 3" WIDE, 4 HOLE TAP

Identifier Numbers 00006-25000

* Barrel Not Drilled Through
(For split main run see CPLK9513)

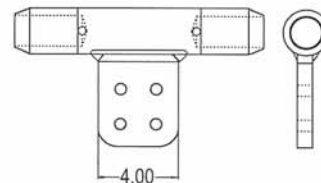


CPLK9504

TEE, TWO CABLE ENDS
to 4" WIDE, 4 HOLE TAP

Identifier Numbers 00006-25000

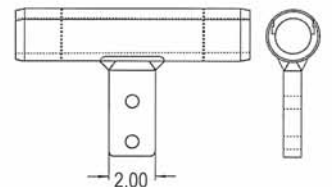
* Barrel Not Drilled Through
(For split main run see CPLK9514)



CPLK9512

TEE, SPLIT MAIN CABLE
RUN to 2" WIDE, 2 HOLE TAP

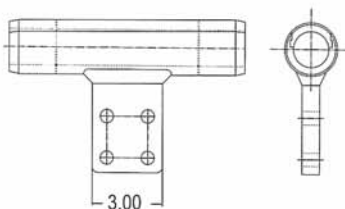
Identifier Numbers 00006-25000



CPLK9513

TEE, SPLIT MAIN CABLE
RUN to 3" WIDE, 4 HOLE TAP

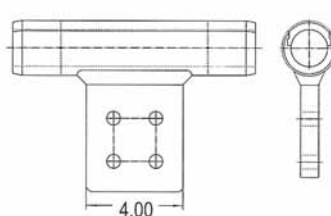
Identifier Numbers 00006-25000



CPLK9514

TEE, SPLIT MAIN CABLE RUN
TO 4" WIDE, 4 HOLE TAP

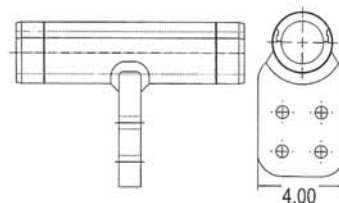
Identifier Numbers 00006-25000



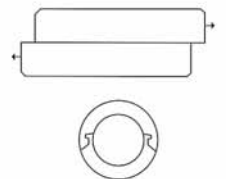
CPLK9584

TEE, SPLIT MAIN CABLE
RUN to 4" WIDE, 4 HOLE
TRANSVERSE TAP

Identifier Numbers 00006-25000



Now Available:
SPLIT FITTINGS

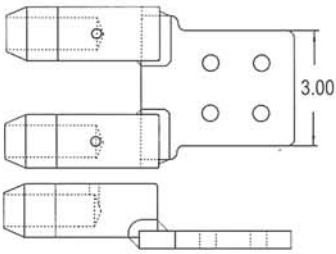


For many of our parts, we now offer the "split fitting" option, where the main run is separable, making it easy to tap into existing cable lines.

Standard Aluminum Compression Connectors

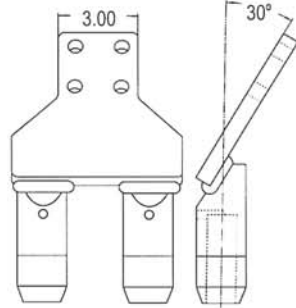
CPLK9632

TERMINAL, 3" WIDE
4 HOLE, 2 CABLES OFFSET
Identifier Numbers 00006-25000



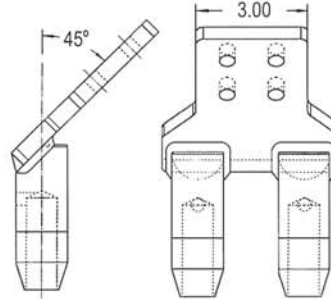
CPLK9633

TERMINAL, 3" WIDE
4 HOLE, 2 CABLES
30° ANGLE
Identifier Numbers 00006-25000



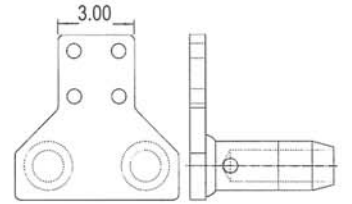
CPLK9634

TERMINAL, 3" WIDE
4 HOLE, 2 CABLES
45° ANGLE
Identifier Numbers 00006-25000



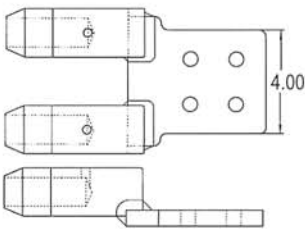
CPLK9639

TERMINAL, 3" WIDE
4 HOLE, 2 CABLES
90° ANGLE
Identifier Numbers 00006-25000



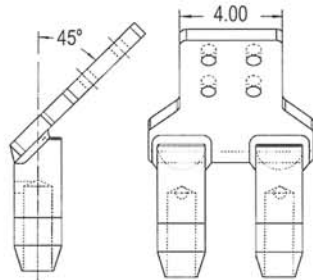
CPLK9642

TERMINAL, 4" WIDE
4 HOLE, 2 CABLES OFFSET
Identifier Numbers 00006-25000
* For non-standard extended spacing
add -8S or -18S for 8" or 18"
centerline spacing between cables.
Example: CPLK9642D22500-18S



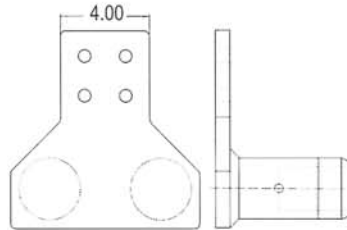
CPLK9644

TERMINAL, 4" WIDE
4 HOLE, 2 CABLES
45° ANGLE
Identifier Numbers 00006-25000
* For non-standard extended spacing
add -8S or -18S for 8" or 18"
centerline spacing between cables.
Example: CPLK9644D22500-18S



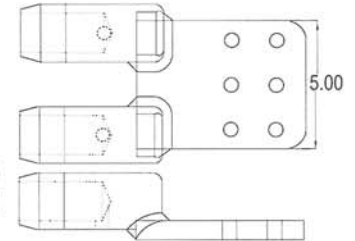
CPLK9649

TERMINAL, 4" WIDE
4 HOLE, 2 CABLES
OFFSET, 90° ANGLE
Identifier Numbers 00006-25000
* For non-standard extended spacing
add -8S or -18S for 8" or 18"
centerline spacing between cables.
Example: CPLK9649D22500-18S



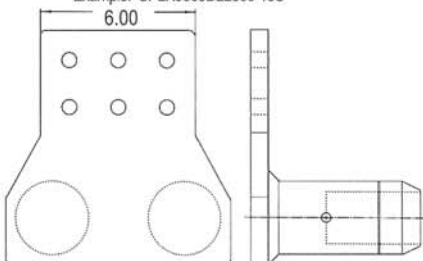
CPLK9652

TERMINAL, 5" WIDE
6 HOLE, 2 CABLES
OFFSET
Identifier Numbers 00006-25000



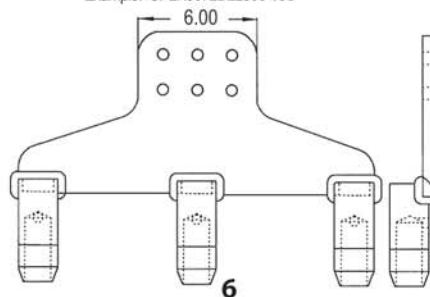
CPLK9669

TERMINAL, 6" WIDE
6 HOLE, 2 CABLES
OFFSET, 90° ANGLE
Identifier Numbers 00006-25000
* For non-standard extended spacing
add -8S or -18S for 8" or 18"
centerline spacing between cables.
Example: CPLK9669D22500-18S



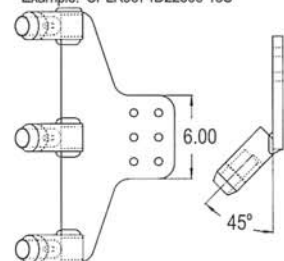
CPLK9672

TERMINAL, 6" WIDE
6 HOLE, 3 CABLES OFFSET
Identifier Numbers 00006-25000
* For non-standard extended spacing
add -8S or -18S for 8" or 18"
centerline spacing between cables.
Example: CPLK9672D22500-18S



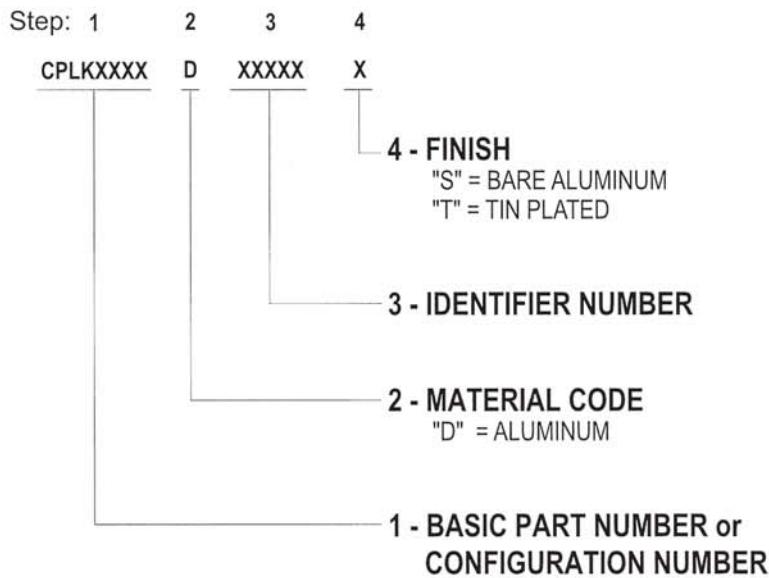
CPLK9674

TERMINAL, 6" WIDE
6 HOLE, 3 CABLES
OFFSET, 45° ANGLE
Identifier Numbers 00006-25000
* For non-standard extended spacing
add -8S or -18S for 8" or 18"
centerline spacing between cables.
Example: CPLK9674D22500-18S



Standard Connectors - Ordering Information & Instructions

Part Number Nomenclature



Follow these steps to complete the part number nomenclature shown to the left. To choose the identifier number, please refer to the CableLok® Connector Size Selection Table.

- 1- Choose the 8 digit connector **configuration number** beginning with "CPLK".
- 2- Add the **material code** "D" for Aluminum.
- 3- Select the proper **identifier number** that represents the size and type of cable conductor from the CableLok® Connector Size Selection Table.
- 4- Add the suffix for the connector **finish** - "S" for bare aluminum, or "T" for tin plated for use with copper cable and equipment applications.

EXAMPLE: **CPLK9209D00006S** is a **2 Hole Terminal** with a 90° angle made from Aluminum with a .500 O.D. barrel, for Size 6 AWG, 7 Strands AAC Cable with a Bare Aluminum Finish.

Installation is Easy with CableLok®

STEP ONE



Prepare and clean cable.

STEP TWO

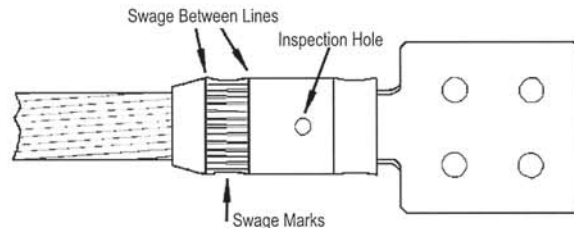


Position the cable into the fitting until visible in inspection hole. Align the tool onto fitting where marked. Actuate pump to compress.

STEP THREE



The swage is complete.



- Prep and clean cable.
- To ensure a proper connection, the DMC CableLok® connector must be placed within the tool so that the swage dies are positioned between the "swage lines".
- The Inspection Hole allows you to verify that the cable is bottomed out in the connector before making the swage.
- DMC CableLok® parts come pre-filled with an anti-oxidant compound to create a superior contact surface.
- The CableLok® tool uses a 10,000 psi hydraulic pump. Pump comes with hydraulic hose and carrying case.
- DMC installation tooling is available for purchase, rent or lease. Contact your local representative for more information.

Special Aluminum Compression Connectors

CL400

TERMINAL

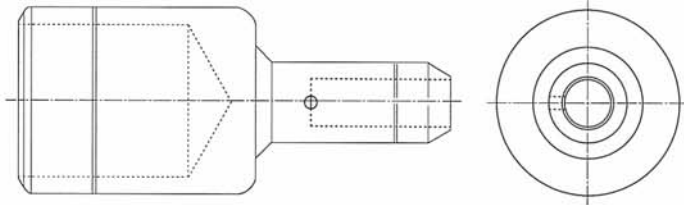
(Bus Tubing to Cable)

Sizes Available:

MAIN/RUN: Bus Tubing Sizes 16 - 96

TAP: Identifier Numbers 00006 - 25000

Example: CL400D64-22500S



CL404

TERMINAL, 45°

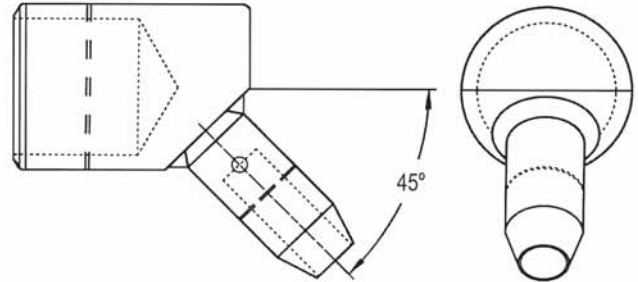
(Bus Tubing to Cable)

Sizes Available:

MAIN/RUN: Bus Tubing Sizes 16 - 96

TAP: Identifier Numbers 00006 - 25000

Example: CL404D48-11130S



CL409

TERMINAL, 90°

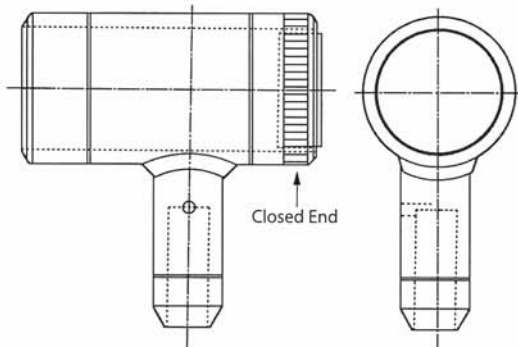
(Bus Tubing with Capped End to Cable Tap)

Sizes Available:

MAIN/RUN: Bus Tubing Sizes 16 - 96

TAP: Identifier Numbers 00006 - 25000

Example: CL409D56-14310S



CL419

TERMINAL, 90°

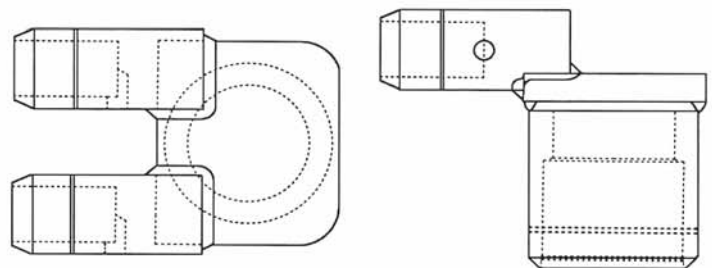
(Bus Tubing to 2 Transverse Cable Taps)

Sizes Available:

MAIN/RUN: Bus Tubing Sizes 16 - 96

TAP: Identifier Numbers 00006 - 25000

Example: CL419D64-25000S



CL420

TERMINAL

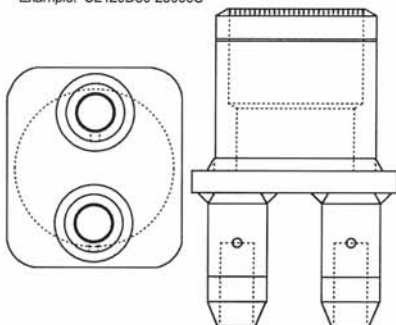
(Bus Tubing to 2 Cable Taps)

Sizes Available:

MAIN/RUN: Bus Tubing Sizes 16 - 96

TAP: Identifier Numbers 00006 - 25000

Example: CL420D80-25000S



CL429

TERMINAL, 90°

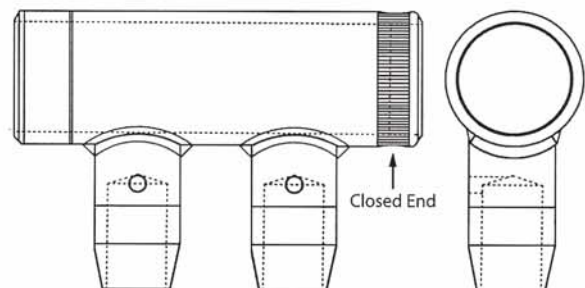
(Bus Tubing with Capped End to 2 Tandem Cable Taps)

Sizes Available:

MAIN/RUN: Bus Tubing Sizes 16 - 96

TAP: Identifier Numbers 00006 - 25000

Example: CL429D48-10335S



* For more bus tubing connectors & tooling, ask about our **PowerLok**® product line.

Special Aluminum Compression Connectors

CL430

STRAIGHT TEE REDUCER

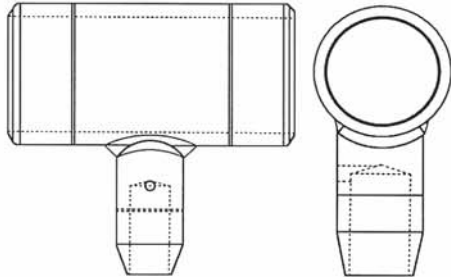
(Bus Tubing Main Run to Cable Tap)

Sizes Available:

MAIN/RUN: Bus Tubing Sizes 16 - 96

TAP: Identifier Numbers 00006 - 25000

Example: CL430D40-13515S



CL432

STRAIGHT TEE REDUCER

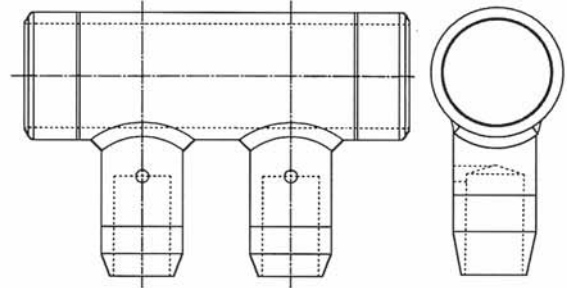
(Bus Tubing Main Run to 2 Cable Taps)

Sizes Available:

MAIN/RUN: Bus Tubing Sizes 16 - 96

TAP: Identifier Numbers 00006 - 25000

Example: CL432D64-22500S

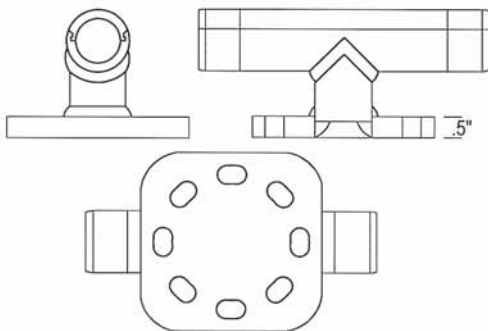


CL451

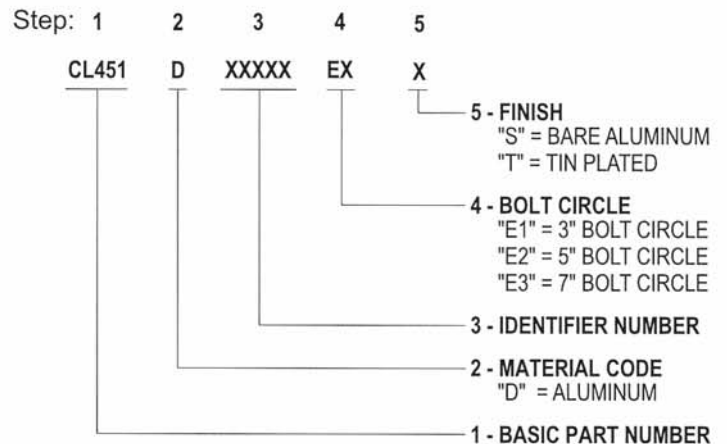
SPLIT CABLE SUPPORT WITH 3", 5", or 7" BOLT CIRCLE

Sizes Available:

CABLE BARREL: Identifier Numbers 00006 - 25000



CL451 Part Number Nomenclature



EXAMPLE: CL451D15900E2S

CL714

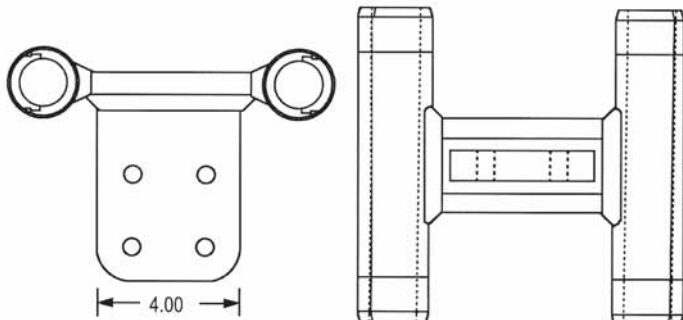
SPLIT SPACER TAP, 2 SPLIT CABLE RUNS TO 4 HOLE, 4" PERPENDICULAR PAD

Sizes Available:

CABLE BARREL: Identifier Numbers 00006 - 25000

* For non-standard extended spacing add -8S or -18S for
8" or 18" centerline spacing between cables.

Example: CL714D22500-18S



CL720

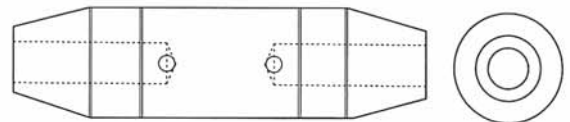
SPLICE

(Cable to Cable)

Sizes Available:

Identifier Numbers 00006 - 25000

Example: CL720D03975S

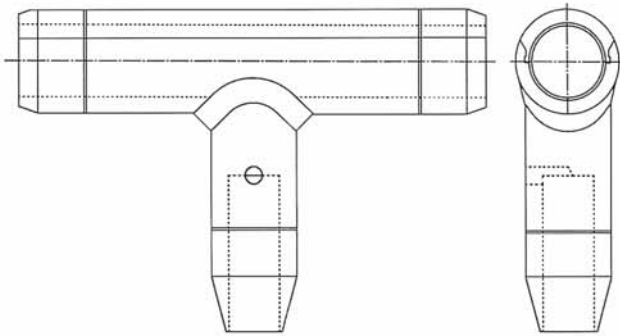


Special Aluminum Compression Connectors

CL731

STRAIGHT TEE REDUCER
(Split Cable Main Run to Cable Tap)

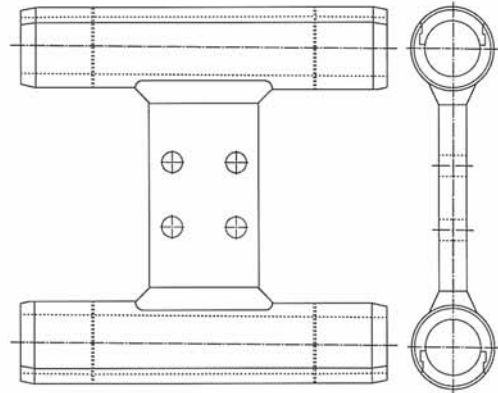
Sizes Available:
CABLE BARREL: Identifier Numbers 00006 - 25000
Example: CL731D14310-12720S



CL732 / CL702

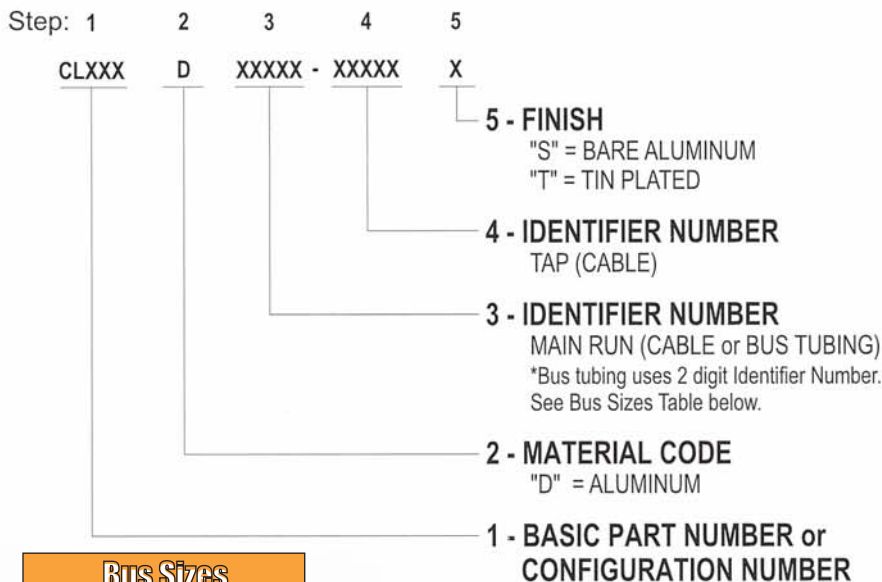
SPACER TAP, 4 HOLE
2 SPLIT CABLE RUNS
WITH 8" or 18" SPACING

Sizes Available:
CABLE BARREL: Identifier Numbers 00006 - 25000
* For non-standard extended spacing add -8S or -18S for 8" or 18" centerline spacing between cables.
Example: CL732D22500-18S
* To order without 4 Hole NEMA Pad, use CL702



Special Aluminum Compression Connectors - Ordering Information & Instructions

Part Number Nomenclature



Bus Sizes		
IDENTIFIER NUMBER	PIPE SIZE	FITTING O.D.
16	1"	2.000
24	1-1/2"	2.500
32	2"	3.000
40	2-1/2"	3.750
48	3"	4.375
56	3-1/2"	5.000
64	4"	5.500
80	5"	6.500
96	6"	8

Follow these steps to complete the part number nomenclature shown to the left. To choose the identifier number for the Tap and Main, please refer to the CableLok® Connector Size Selection Table.

- 1- Choose the 5 digit connector **configuration number** beginning with "CL" above.
- 2- Add the **material code** "D" for Aluminum.
- 3- Use the CableLok® Connector Size Selection table to select the **identifier number** for BUS TUBING or CABLE MAIN RUN. Tube identifier is 2 digits long; Cable identifier is 5 digits long.
- 4- Add the **identifier number** for the size and type of cable conductor for the **TAP**. Refer to the CableLok® Connector Size Selection Table.
- 5- Add the suffix for the connector **finish** - "S" for bare aluminum, or "T" for tin plated for use with copper cable applications.

EXAMPLE: CL400D64-11130S is a Terminal going from 4" bus tubing to 1113 MCM AAC cable.

CableLok® Connector Size Selection Table

BARREL			IDENTIFIER NO.	AAC Bare Aluminum			ACSR Aluminum With Steel Reinforce			
Group No.	O.D.	Swage Tool Head Assembly		Code Word	Size AWG / kcmil	Stranding (No. of Wires)	Code Word	Size AWG / kcmil	Stranding (Al/St)	
1	.500	DLT45CLHA00004	00006	Peachbell	6	7/w	Turkey	6	6/1	
			00004	Rose	4	7/w	Thrush	5	6/1	
2	.750	DLT45CLHA00010	00002	Iris	2	7/w	Swan	4	6/1	
			00001	Pansy	1	7/w	Swanate	4	7/1	
			00010	Poppy	1/0	7/w	Sparrow	2	6/1	
								Sparate	2	7/1
3	1.000	DLT45CLHA02500	00020	Aster	2/0	7/w	Robin	1	6/1	
			00030	Phlox	3/0	7/w	Raven	1/0	6/1	
			00040	Oxlip	4/0	7/w	Quail	2/0	6/1	
			02500	Sneezewort	250.0	7/w	Pigeon	3/0	6/1	
4	1.250	DLT45CLHA03975		Valerian	250.0	7/w	Penguin	4/0	6/1	
			02668	Daisy	266.8	7/w				
				Laurel	266.8	19/w	Waxwing	266.8	18/1	
			03000	Peony	300.0	19/w	Partridge	266.8	26/7	
			03500	Tulip	336.4	19/w	Ostrich	300.0	26/7	
				Daffodil	350.0	19/w	Merlin	336.4	18/1	
			03975	Canna	397.5	19/w	Linnet	336.4	26/7	
							Oriole	336.4	30/7	
5	1.500	DLT45CLHA05565					Chickadee	397.5	18/1	
			04500	Goldentuft	450.0	19/w	Brant	397.5	24/7	
							Ibis	397.5	25/7	
			04770	Cosmos	477.0	19/w	Lark	397.5	30/7	
				Syringa	477.0	37/w				
			05000	Zinnia	500.0	19/w	Pelican	477.0	18/1	
6	1.750	DLT45CLHA07155		Hyacinth	500.0	37/w				
			05565	Dahlia	556.5	19/w	Flicker	477.0	24/7	
				Mistletoe	556.5	37/w	Hawk	477.0	26/7	
			06000	Meadowsweet	600.0	37/w	Hen	477.0	30/7	
			06360	Orchid	636.0	37/w	Osprey	556.5	18/1	
			07000					Parakeet	556.5	24/7
					Dove	556.5	26/7			
	Verbena	700.0		37/w	Eagle	556.5	30/7			
	Flag	700.0		61/w	Peacock	605.0	24/7			
07155					Swift	636.0	36/1			
		Violet	715.5	37/w	Kingbird	636.0	18/1			
7	1.875	DLT45CLHA08745		Nasturtium	715.5	61/w	Squab	605.0	26/7	
			07500				WoodDuck	605.0	30/7	
					Petunia	750.0	37/w	Teal	605.0	30/19
					Cattail	750.0	61/w	Rook	636.0	24/7
			07950					Grosbeak	636.0	26/7
								Scoter	636.0	30/7
								Egret	636.0	30/19
					Arbutus	795.0	37/w	Flamingo	666.6	24/7
					Lilac	795.0	61/w	Gannet	666.6	26/7
								Stilt	715.5	24/7
			08745					Crow	715.5	54/7
					Anemone	874.5	37/w	Coot	795.0	36/1
	Crocus	874.5		61/w	Starling	715.5	26/7			
					Redwing	715.5	30/19			
					Tern	795.0	45/7			

CableLok® Connector Size Selection Table

BARREL			IDENTIFIER NO.	AAC Bare Aluminum			ACSR Aluminum With Steel Reinforce		
Group No.	O.D.	Swage Tool Head Assembly		Code Word	Size AWG / kcmil	Stranding (No. of Wires)	Code Word	Size AWG / kcmil	Stranding (Al/St)
8	2.000	DLT45CLHA11130	09000	Cockscomb	900.0	37/w	Cuckoo	795.0	24/7
				Snapdragon	900.0	61/w	Condor	795.0	54/7
							Drake	795.0	26/7
			09540	Magnolia	954.0	37/w	Mallard	795.0	30/19
				Goldenrod	954.0	61/w	Ruddy	900.0	45/7
			10000	Hawkweed	1000.0	37/w	Crane	874.5	54/7
				Camellia	1000.0	61/w	Canary	900.0	54/7
							Rail	954.0	45/7
			10335	Bluebell	1033.5	37/w	Cardinal	954.0	54/7
				Larkspur	1033.5	61/w			
			11130	Marigold	1113.0	61/w	Ortolan	1033.5	45/7
							Curlew	1033.5	54/7
9	2.250	DLT45CLHA15900	11925	Hawthorn	1192.5	61/w	Bluejay	1113.0	45/7
			12720	Narcissus	1272.0	61/w	Finch	1113.0	54/19
			13515	Columbine	1351.5	61/w	Bunting	1192.5	45/7
							Grackle	1192.5	54/19
			14310	Carnation	1431.0	61/w	Bittern	1272.0	45/7
							Pheasant	1272.0	54/19
			15105	Gladiolus	1510.5	61/w	Dipper	1351.5	45/7
							Martin	1351.5	54/19
			15900	Coreopsis	1590.0	61/w	Bobolink	1431.0	45/7
							Plover	1431.0	54/19
			17500	Jessamine	1750.0	61/w	Nuthatch	1510.5	45/7
							Parrot	1510.5	54/19
18000				Lapwing	1590.0	45/7			
				Falcon	1590.0	54/19			
10	2.750	DLT58CLHA25000	20000	Cowslip	2000.0	91/w	Chukar	1780.0	84/19
			22500	Sagebrush	2250.0	91/w	Bluebird	2156.0	84/19
			25000	Lupine	2500.0	91/w	Kiwi	2167.0	72/7
							Thrasher	2312.0	76/19

CableLok® Tool Kits

DMC CableLok® Tooling is easy to use and is available through rent, lease or purchase.

We make it *easy for you.*



TYPICAL TOOLING PART NUMBERS

POWER UNITS
DLT45MAPW0000
DLT58MAPW0000

TOOL BOX
DLT45CLBA0003

ELECTRIC PUMP
(10,000 psi)
DLT12MAPE1000

HEAD ASSEMBLIES
See chart above

Check our website for your local representative

Ask us about our other Power Product Lines

DMC **PowerLok®** has been successfully installed around the world for over 10 years. Use **PowerLok®** for joining your substation bus with no welding.

Try DMC **GroundLok®** for connecting your copper grounding systems. Create a fast, easy, safe connection within minutes while using the same tooling as **CableLok®**.

Use DMC **Telecom GroundLok®** connectors for all of your cell site grounding applications. With a lightweight tool and a variety of configurations available, installation is simple.

When you use Power Products manufactured by DMC, you can be sure that you will have a technically superior connection.

DMC

DESIGNED METAL CONNECTIONS

World Headquarters
14502 South Figueroa Street
Gardena, CA 90248 USA
Tel: (310) 323-6200 • Fax: (310) 715-9488
www.dmcusa.com